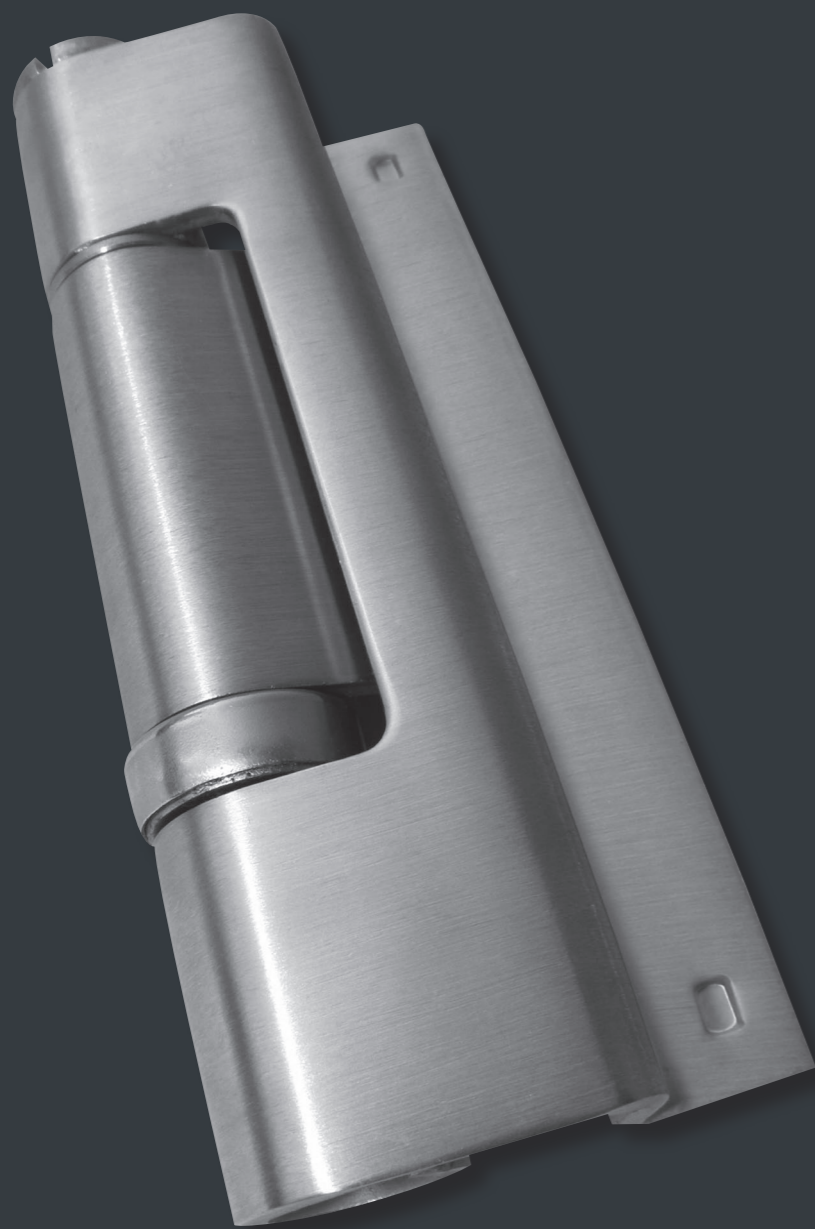




schwarte

PRODUCT CATALOGUE 2011/12



SCHWARTE Weld-on Hinge

SCHWARTE weld-on hinge

for heavy steel and fire resistant doors

- construction hinge
- weld-on hinge

Technical features

- 2- and 3-part weld-on hinges for steel doors
- Height: 60 - 300 mm
- Several dimensions available on request
- High load bearing capacity, tested according to EN1935
- Available with steel or brass pin
- Optionally with security pin and oil groove
- Bearing or ball bearing ring as accessories in case of loose pin and heavy load (to be ordered separately)

Finishes available

- Steel, bright
- Steel, galvanized
- Stainless steel
- Stainless steel, satin

Custom-specific hinges

Regardless of the order quantity, we design and produce custom-specific hinges based on a dimensional sketch or drawing, which suit your individual requirements (e.g. height, number of leaves, material thickness, cranking, finish, weld-on, screw-on, ...).

Content

p 118	Construction hinge	Steel frames / doors
p 125		Fire resistant doors
p 128	Weld-on hinge	Round tip
p 129		Flat tip

Weld-on Hinge L 2

2-part
construction hinge for steel doors and (air) flaps

Product Specification

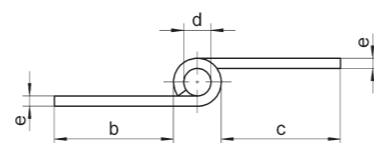
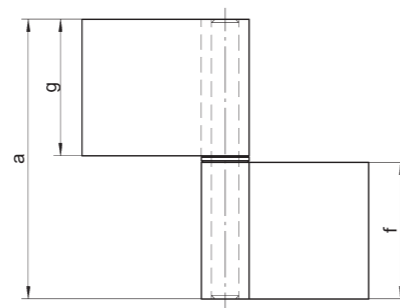
Hinge	weld-on
Door (flap)	steel
Pin / Ring	steel / brass
Direction	DIN left / right
Finish	bright steel / galvanized

Please specify DIN direction when ordering

Technical Data

a	b/c	d	e	f/g	
50	23	6	2	25	mm
60	23	6	2	30	mm
70	25	8	2	35	mm
80	25	8	3	40	mm
100	35	9	3	50	mm
120	35	9	3	60	mm

a. Knuckle length, b/c Leaf length, d. Knuckle-Ø, e. Material thickness, f/g. Leaf width



Certification Mark

schwarte

Weld-on Hinge KO 1

2-part construction hinge for steel doors

Product Specification

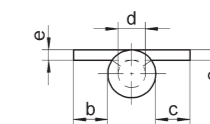
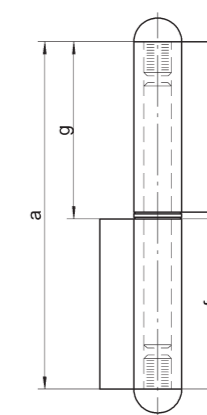
Hinge	weld-on
Door / frame	steel
Pin	steel / brass
Direction	DIN left / right
Finish	bright steel / galvanized

Please specify DIN direction when ordering

Technical Data

a	b/c	d	e	f/g	
80	8	9	3	40	mm
100	8	9	3	50	mm
120	8	9	3	60	mm

a. Knuckle length, b/c Leaf length, d. Knuckle-Ø, e. Material thickness, f/g. Leaf width



Certification Mark

schwarte

Weld-on Hinge KO 2

2-part construction hinge for steel doors

Product Specification

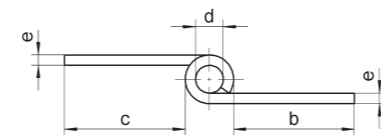
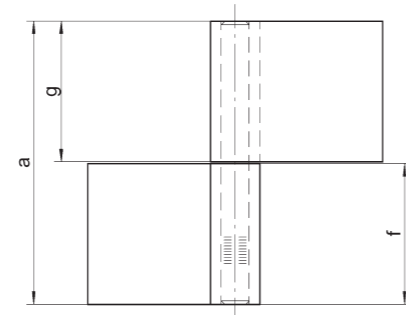
Hinge	weld-on
Door / frame	steel
Pin	fixed in frame part, steel / brass
Direction	DIN left / right
Finish	bright steel / galvanized

Please specify DIN direction when ordering

Technical Data

a	b/c	d	e	f/g	
60	23	6	2	80	mm
80	25	8	3	40	mm
100	35	9	3	50	mm

a. Knuckle length, b/c Leaf length, d. Knuckle-Ø, e. Material thickness, f/g. Leaf width



Certification Mark

schwarte

Weld-on Hinge KO 4

2-part construction hinge for steel doors

Product Specification

Hinge	weld-on
Door	steel
Pin	loose
Direction	DIN left / right
Finish	bright steel / galvanized / stainless
Accessory (opt.)	bearing / ball bearing ring <small>to be ordered separately</small>

Please specify DIN direction when ordering

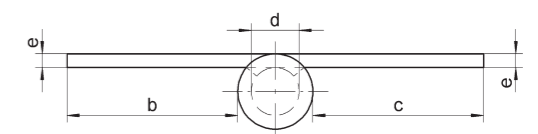
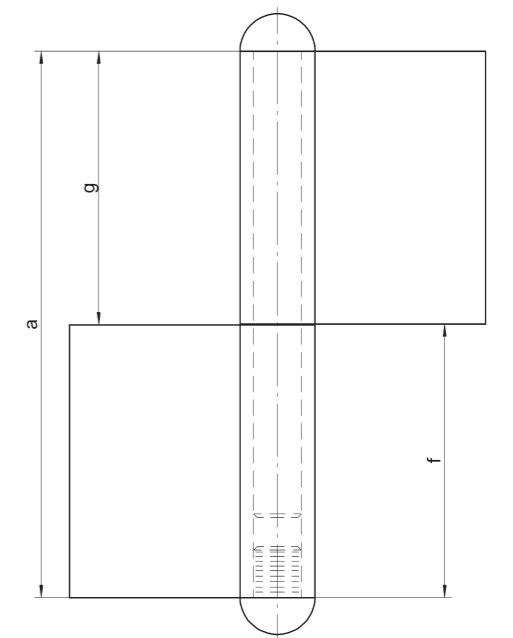
Technical Data – Steel

a	b/c	d	e	f/g	
100	30	9	3	50	mm
120	30	9	3	60	mm
140	50	14	4	70	mm
160	50	12	3	80	mm
160	50	14	4	80	mm
180	50	14	4	90	mm
180	50	16	5	90	mm
200	50	14	4	100	mm
200	50	16	5	100	mm

Technical Data – Stainless steel

a	b/c	d	e	f/g	
140	50	12	3	70	mm
160	50	12	3	80	mm
180	50	12	3	90	mm
200	50	14	4	100	mm

a. Knuckle length, b/c Leaf length, d. Knuckle-Ø, e. Material thickness, f/g. leaf width. Further dimensions available on request.



Certification Mark

schwarte

Weld-on Hinge KO 6

2-part construction hinge for steel doors

Product Specification

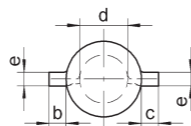
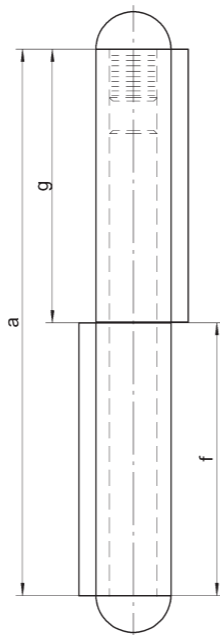
Hinge	weld-on
Door / frame	steel
Pin	fixed
Direction	DIN left / right
Finish	bright steel / galvanized

Please specify DIN direction when ordering

Technical Data

a	b/c	d	e	f/g	
80	5	9	3	40	mm
100	5	9	3	50	mm
120	5	9	3	60	mm
140	5	12	3	70	mm
140	5	14	4	70	mm
140	11	14	4	70	mm
160	5	12	3	80	mm
160	5	14	4	80	mm
160	11	14	4	80	mm
180	5	14	4	90	mm
180	11	14	4	90	mm
200	5	14	4	100	mm
200	11	14	4	100	mm

a. Knuckle length, b/c Leaf length, d. Knuckle-Ø, e. Material thickness, f/g. Leaf width.
Further dimensions available on request.



Certification Mark

schwarte

Weld-on Hinge KO 7

2-part construction hinge for steel doors

Product Specification

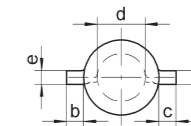
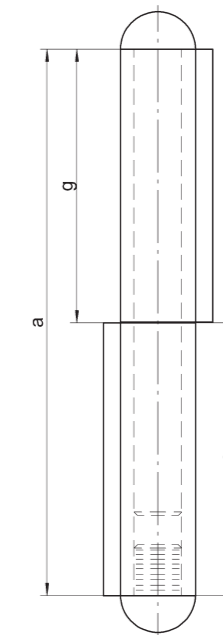
Hinge	weld-on
Door / frame	steel
Pin	loose
Direction	DIN left / right
Finish	bright steel / galvanized
Accessory (opt.)	bearing / ball bearing ring <small>to be ordered separately</small>

Please specify DIN direction when ordering

Technical Data

a	b/c	d	e	f/g	
80	5	9	3	40	mm
100	5	9	3	50	mm
120	5	9	3	60	mm
140	5	12	3	70	mm
140	5	14	4	70	mm
140	11	14	4	70	mm
160	5	12	3	80	mm
160	5	14	4	80	mm
160	11	14	4	80	mm
180	5	14	4	90	mm
180	11	14	4	90	mm
200	5	14	4	100	mm
200	11	14	4	100	mm

a. Knuckle length, b/c Leaf length, d. Knuckle-Ø, e. Material thickness, f/g. Leaf width.
Further dimensions available on request.



Certification Mark

schwarte

Weld-on Hinge KO 8

3-part construction hinge for steel doors and gates

Product Specification

Hinge	weld-on
Door / frame	steel
Pin	loose
Direction	DIN left / right
Finish	bright steel / galvanized / stainless
Accessory (opt.)	bearing / ball bearing ring <small>to be ordered separately</small>

Please specify DIN direction when ordering

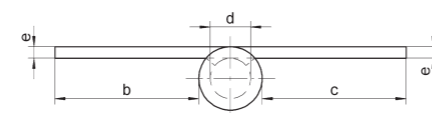
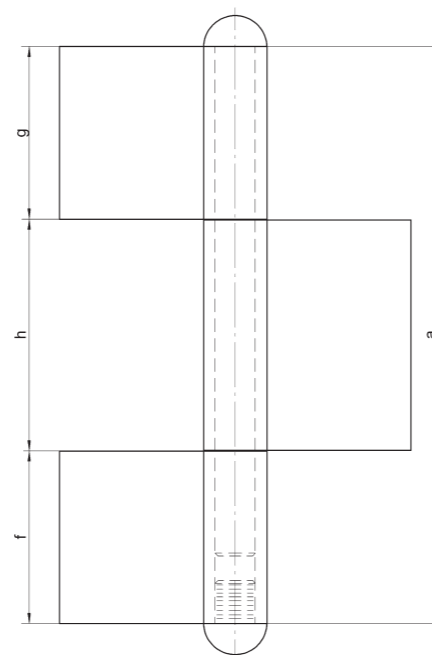
Technical Data – Steel

a	b/c	d	e	f/g	h	
180	50	14	4	60	60	mm
220	50	14	4	70	80	mm
240	50	16	5	70	100	mm
260	50	16	5	80	100	mm
260	50	20	6	80	100	mm
300	50	20	6	100	100	mm

Technical Data – Stainless steel

a	b/c	d	e	f/g	h	
180	50	12	3	60	60	mm
220	50	12	3	70	80	mm
240	50	16	5	70	100	mm
260	50	16	5	80	100	mm

a. Knuckle length, b/c Leaf length, d. Knuckle-Ø, e. Material thickness, f/g. Leaf width, h. Leaf width. Further dimensions available on request



Certification Mark

schwarte

Weld-on Hinge KOF 72

2-part construction hinge for fire resistant doors

Product Specification

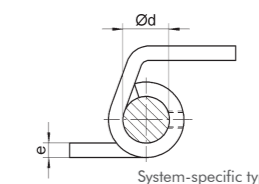
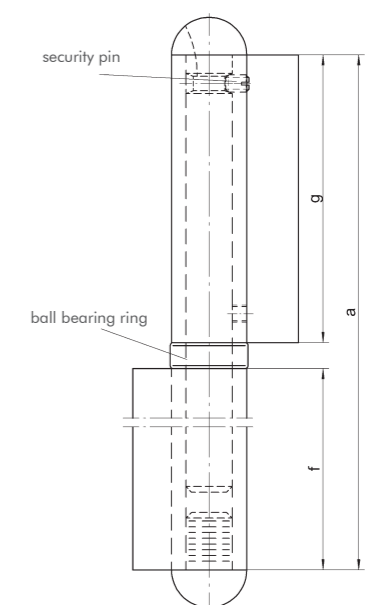
Hinge	weld-on (screw-on)
Door	fire resistant, steel
Pin	loose
Direction	DIN left / right
Finish	bright steel / galvanized / stainless
Accessory	hardened ball bearing ring, oil groove, security pin

Technical Data

a	d	e	f/g	
200	16	5	100	mm

a. Knuckle length, d. Knuckle-Ø, e. Material thickness, f/g. Leaf width

System-specific type, available in different variants



Certification Mark

CE 

Weld-on Hinge KOF 75

3-part construction hinge for fire resistant doors

Product Specification

Hinge	weld-on (screw-on)
Door	fire resistant, steel
Pin	loose
Direction	DIN left / right
Finish	bright steel / galvanized / stainless
Accessory	hardened ball bearing ring, oil groove, security pin

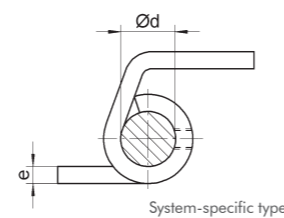
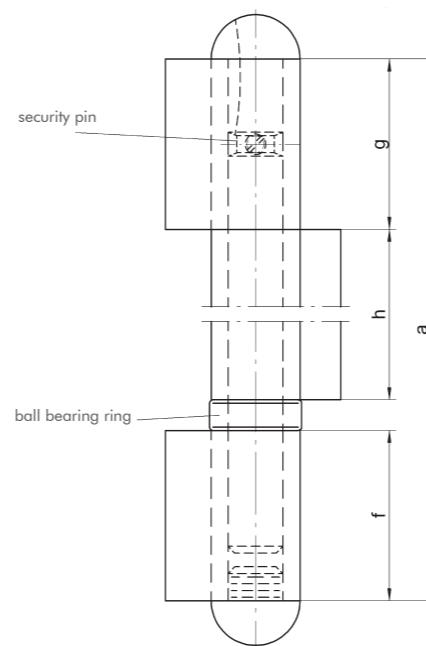
Technical Data KOF 75

a	d	e	f/g	h	
200	16	5	50	100	mm

a. Knuckle length, d. Knuckle-Ø, e. Material thickness, f/g. Leaf width, h. Leaf width

System-specific type, available in different variants

Certification Mark



Weld-on Hinge KO 500

2-part construction hinge for fire resistant doors

Product Specification

Hinge	weld-on (screw-on)
Door	fire resistant, steel
Pin	loose
Direction	DIN left / right
Finish	bright steel / galvanized / stainless
Accessory	hardened ball bearing ring, oil groove, security pin

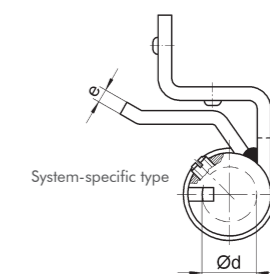
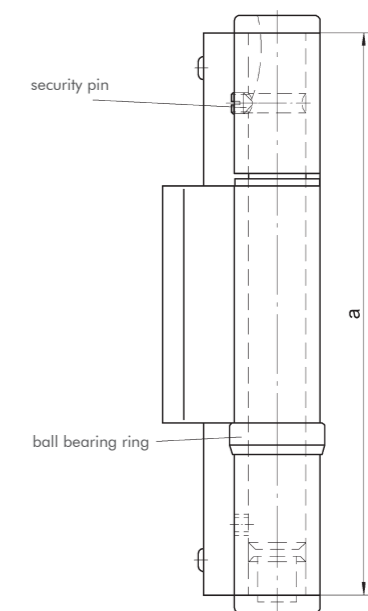
Technical Data KO 500

a	d	e	
160	16	4	mm

a. Knuckle length, d. Knuckle-Ø, e. Material thickness

System-specific type, available in different variants

Certification Mark



Weld-on Hinge KO 40

2-part weld-on hinge with round tip

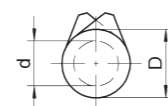
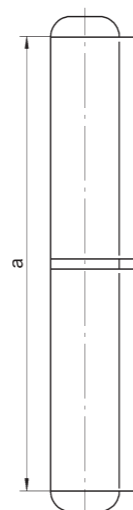
Product Specification

Hinge	weld-on
Door / frame	steel
Variants	KO 40 - steel pin KO 41 - brass pin KO 42 - loose steel pin KO 43 - loose brass pin
Direction	DIN left / right
Finish	bright steel / stainless
Accessory	brass ring

Technical Data

a	D	d	
40	8	5	mm
50	8	5	mm
60	10	6	mm
80	13	8	mm
100	16	10	mm
120	16	11	mm
135	18	12	mm
150	20	13	mm
180	20	14	mm

a. Knuckle length, D. Knuckle-Ø (outer), d. Knuckle-Ø (inner).
Further dimensions available on request



Certification Mark

schwarte

Weld-on Hinge KO 50

2-part weld-on hinge with flat tip

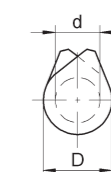
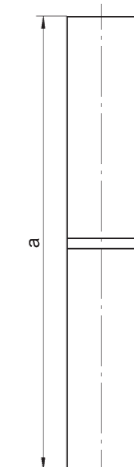
Product Specification

Hinge	weld-on
Door / frame	steel
Variants	KO 50 - steel pin KO 51 - brass pin
Direction	DIN left / right
Finish	bright steel
Accessory	brass ring

Technical Data

a	D	d	
45	9	5	mm
60	10	6	mm
80	13	8	mm
100	16	10	mm
120	16	11	mm
140	20	11	mm
160	20	12	mm
180	20	14	mm
180	20	14	mm

a. Knuckle length, D. Knuckle-Ø (outer), d. Knuckle-Ø (inner).
Further dimensions available on request.



Certification Mark

schwarte



SCHWARTE GmbH Baubeschläge

Hagener Straße 59 · 57489 Drolshagen

P +49 2761 9741 0 · F +49 2761 73011

Internet www.schwarte.net

E-Mail info@schwarte.net